

TH1218T1 Threshold Detector

12.0-18.0 GHz Octave/Narrow Band



Technical Characteristics

Product Features

| |
|--|
| High reliability hermetically sealed |
| 10 dB dynamic range: -20 dBm to -10dBm |
| Propagation delay: 10 nS typical |
| TTL logic output |
| Minimum pulse width: 50 nS typical |
| Temperature stability: 1.0 dB Typ., 3 dB above threshold setting |
| Threshold setting internally fixed or external voltage |
| DC power (no load): ± 5 VDC @ 100mA max. |

Max. Ratings

| | |
|------------------------|------------------------|
| Storage Temperature: | -65°C to +125°C |
| Operating Temperature: | -55°C to +90°C |
| Maximum input power: | +25dBm Peak, +20dBm CW |

Product Export Classification

ECCN: EAR99 (Unless otherwise specified)
HTS: 8542330000

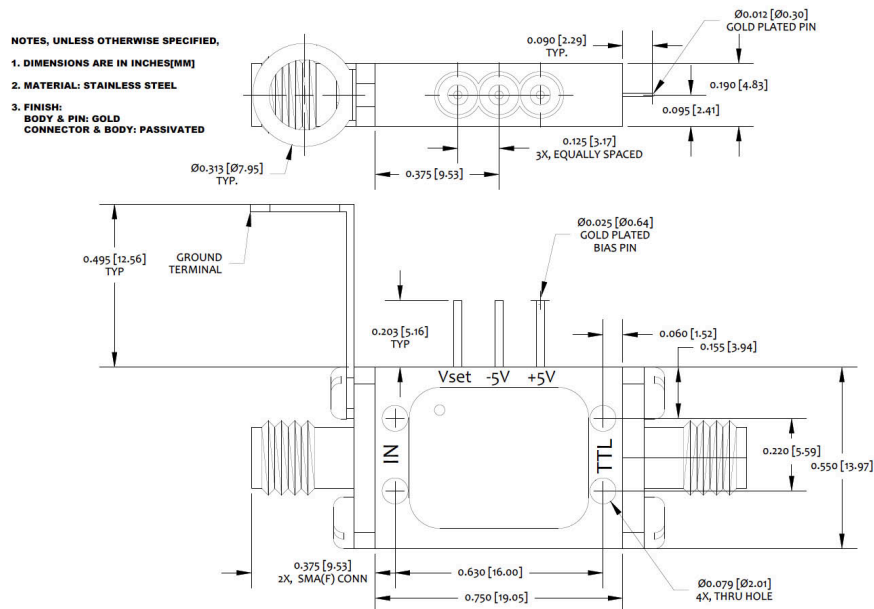
Electrical Specifications

| Parameters | Freq. (GHz) | Min. | Typical | Max. | Units |
|---------------------|--------------|------|---------|------|--------|
| Frequency Range | 12.0 to 18.0 | | | | GHz |
| Threshold Variation | | | 0.5 | | +/- dB |
| VSWR | | | 3.0:1 | | |

NOTES:

1. Response time for input change > 3dB above CW threshold. R(load)=1M Ω , C(load)=100pF

Outline Drawing

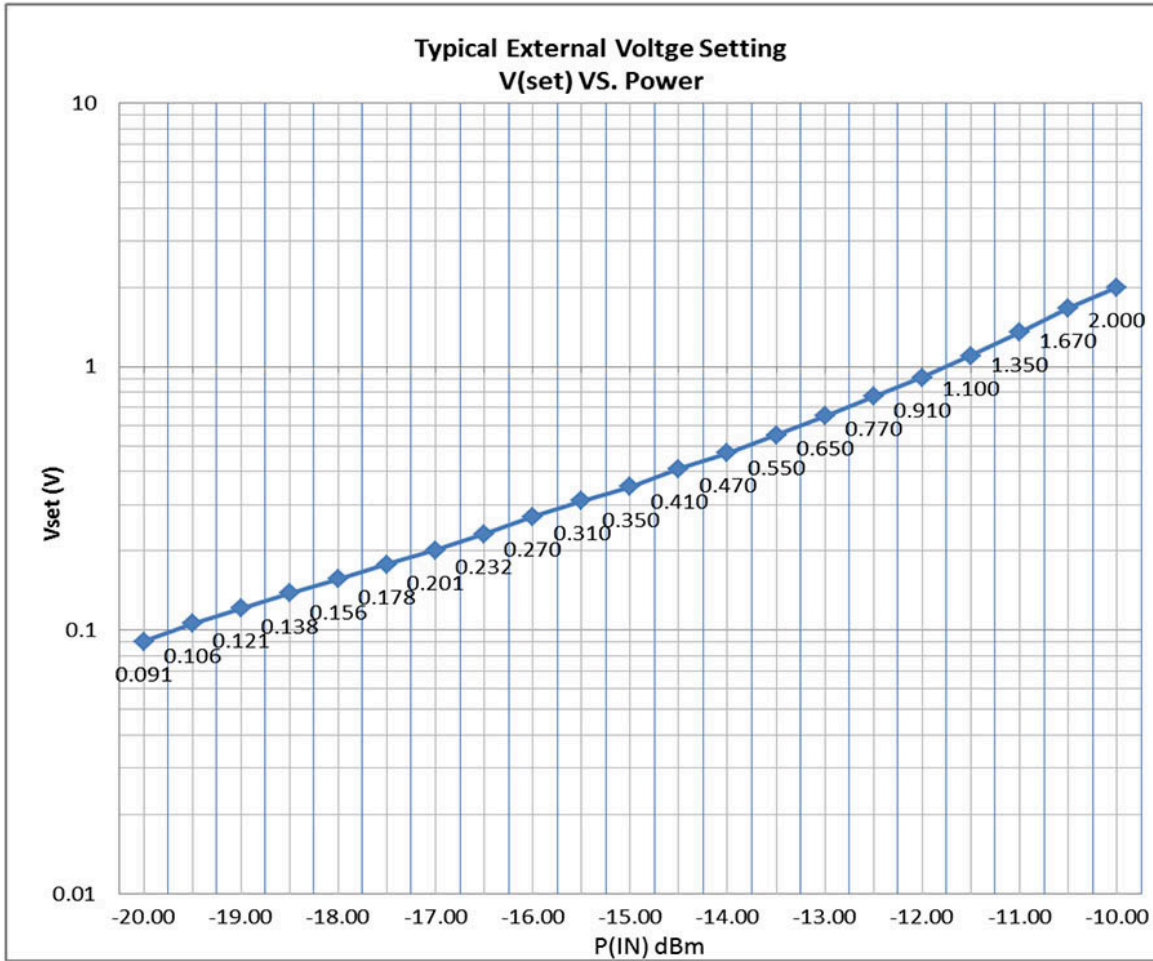


TH1218T1 Threshold Detector

12.0-18.0 GHz Octave/Narrow Band



Typical Regulated Vset Curve @ +25°C



DISCLAIMER: Subject to change without notice. Rev(A) 01/16/20